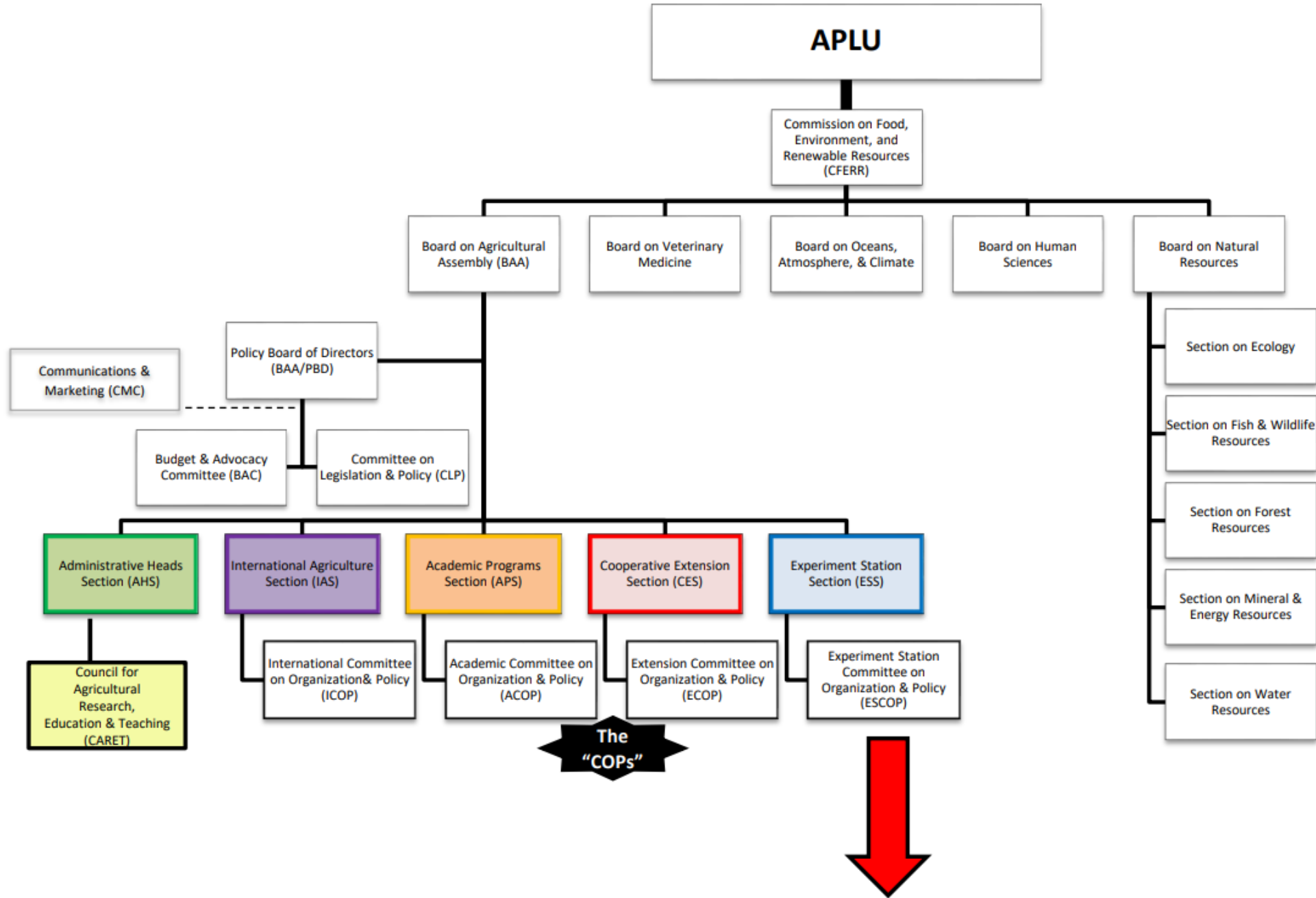


BACKGROUND

- A.B. Degree – Biology – Occidental College, Los Angeles
- Ph.D. – Biochemistry – University of Nevada, Reno
Oxidative Stress/ Mechanism of Action
- Post-doc – Biochem/Pharmacology – Yale University, New Haven

BACKGROUND

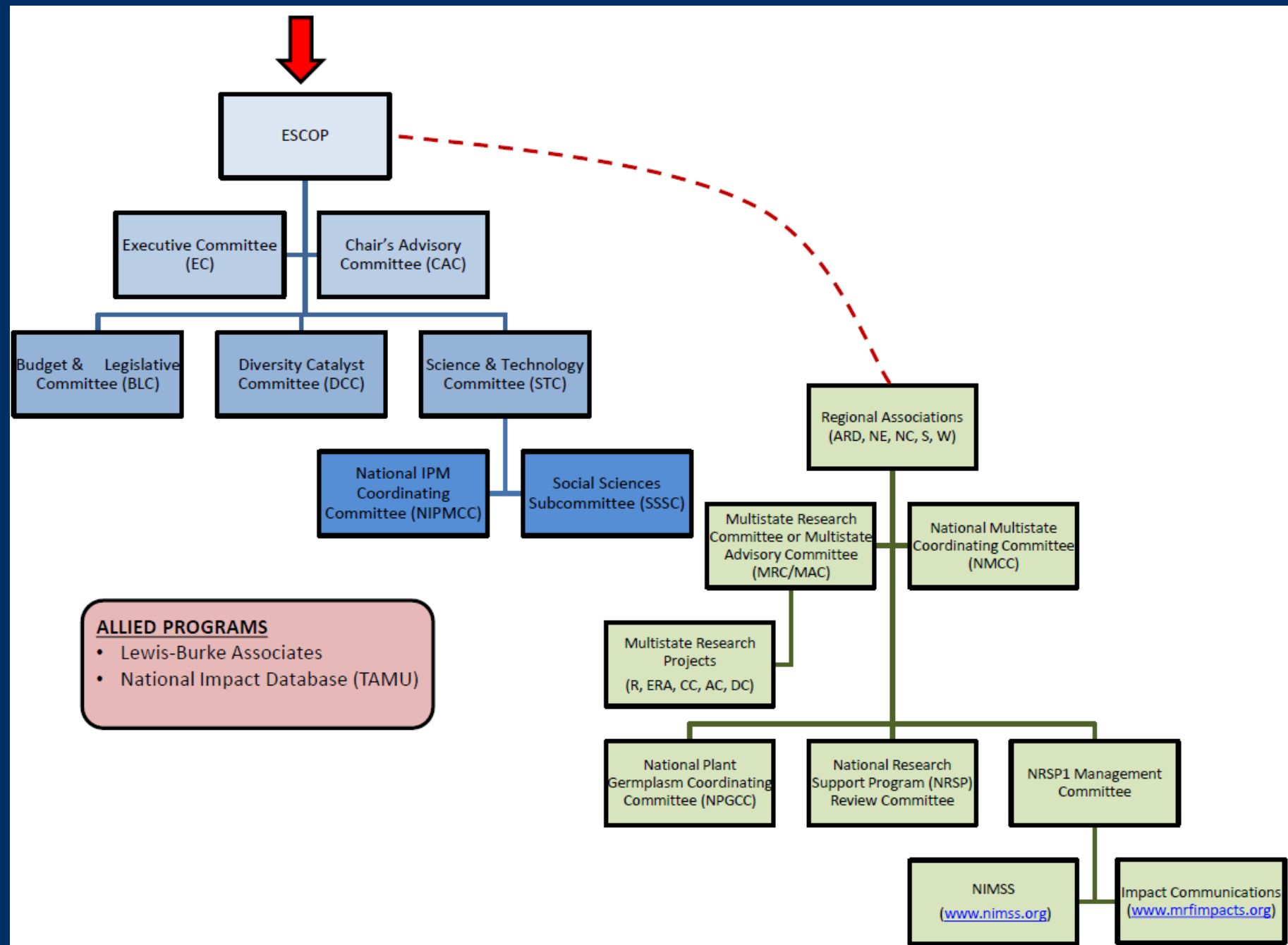
- University of Nevada, Reno – Dept. of Nutrition – Dept. of Agriculture, Nutrition and Veterinary Sciences
 - Chair – 2000 – 2015
 - Director NAES – 2015 – Present
- WAAESD – Executive Committee 2016 – Present
 - Chair 2018 and 2019
- ESCOP Chair Elect – 2020; Chair 2021



— Research by —

Nevada Agricultural Experiment Station





ALLIED PROGRAMS

- Lewis-Burke Associates
- National Impact Database (TAMU)

ESCOP PRIORITIES/PROGRESS

- Support increased appropriations for USDA-NIFA to enhance capacity funding for research, Extension and education and fully fund the AFRI competitive grants program.
- BLC recommendation for a 14% increase in appropriations for Hatch and AFRI was approved through the APLU process.

ESCOPE PRIORITIES/PROGRESS

- Develop new funding opportunities to address critical infrastructure for Colleges of Agriculture at Land-Grant Universities
- Acting on Gordian report of infrastructure needs/deferred maintenance (\$11.5 B) for Colleges of Agriculture APLU/BAA proposed funding through the Research Facilities Act. Funding for 1890s and minority serving institutions (~\$1.0 B) in Build Back Better but none for 1862s.
- BAC and Policy Board of Directors recommended \$365 M for FY 23 NIFA budget for 1862 and other land grant universities infrastructure funding.

ESCOP PRIORITIES/PROGRESS

- Strengthen strategic partnerships with traditional and nontraditional entities
- Developing stronger relations with NIFA through interactions with their leadership.

ESCOP PRIORITIES/PROGRESS

- Fully Integrate Diversity, Equity and Inclusion as an essential component of all our programs.
- Call to action by Diversity Catalyst Committee to recognize how racial injustices may have occurred in the past and to ensure that these programs/practices do not perpetuate these injustices.
- Improve the organization readiness and strategic capacity to deal with the next major crisis. **Ongoing**

ESCOP PRIORITIES/ PROGRESS

- Adopt and implement a strategic plan for communications and marketing, including transitioning the National Impact Database Committee to a subcommittee of APLU's CMC.
- Transition was approved by ESS leadership and is now pending a vote for approval.

ESCOP PRIORITIES/PROGRESS

- Implement national and regional research among universities/institutions to help control the COVID-19 pandemic, support economic development, tackle climate change and advance racial equity as well as retain America's position as the world leader in agricultural research.
- Science and Technology Committee asked all regional associations to crosswalk their multistate committee portfolios with both NIFA priorities related to the Administration's goals and the Grand Challenges from the ESCOP roadmap.

CHAIRS INITIATIVES

- Strengthen partnership and engagement with NIFA, including Project CAFÉ, the NIFA reporting system, Land Grant University to You (LGU2U) comprehensive map of all branch experiment station sites and other items that may arise.
- Northcentral Region continued work with NIFA on LGU2U efforts with sessions on Accountability and Compliance and Sustaining the Partnership since the beginning of my term.
- Updating a 2015 interactive map of the branch stations for the 1862 Land-grant experiment stations.

CHAIR INITIATIVES/PROGRESS

- Develop and implement strategies to equitably distribute potential funding for critical infrastructure for Colleges of Agriculture at Land-grant Universities.
- The ESS funded the Gordian Study (refresh of the 2015 Sightlines study on deferred maintenance and replacement costs for colleges of agriculture facilities across the nation).
- Continue to monitor congressional funding of the Build Back Better bill.

CHAIR INITIATIVES/PROGRESS

- Develop and implement a strategy to make increased capacity funding a priority for 1862, 1890 and 1994 land grant colleges and universities.
- I sent letter to NIFA requesting an initial increase of 28% for FY 23, with subsequent 14% increases for at least the next 5 years.
- I also support the efforts of the 1994 Land-grants to increase each of their capacity lines to a total of \$17.5 M.

CHAIRS INITIATIVE/PROGRESS

- Position ESS and its LGU members to take a leading role in addressing climate change challenges as they impact agriculture and natural resources.
- Climate change challenge session was held at ESS meeting in Lake Tahoe in October. Three strategies developed:
 - Organize interdisciplinary teams to support specific climate change programs
 - Enable climate change research initiative through strategic investment
 - Engage internal and external agencies to address specific climate change issues.

CHAIRS INITIATIVE/PROGRESS

- Develop an ESS Brand and Advocacy Toolkit to provide ESCOP leadership and ESS members with consistent messaging and resources focused on ESS advocacy and educational priorities.
- Solicited proposals and interviewed marketing firms to help with a brand refresh and development of an advocacy toolkit.
- Next step will be the formation of an ad hoc committee to help develop the ESS brand and toolkit with representation from all regions.

MAJOR CHALLENGES FACING ESS

- Development of a highly recognizable brand that our stakeholders and the public will immediately associate with the Experiment Stations of the Land-grant University System.
- Evaluating our current relationship within the APLU system and developing and implementing a strategy so that our priorities are represented by APLU.